

**ECO-YACHTING**  
SAVE THE PLANET AND SAVE MONEY

# ShowBoats

## INTERNATIONAL

### Ultimate Mixer!

# 21

SAIL AND MOTOR  
YACHTS MEET FOR  
THE FIRST CARIBBEAN  
SUPERYACHT REGATTA  
& RENDEZVOUS

### REFIT SPECIAL

INCREDIBLE TRANSFORMATIONS

**183' ILLUSION**  
**105' MINISKIRT**

### TIPS FOR YOUR NEXT REFIT

- BUILDING A BULLETPROOF YARD CONTRACT
- 4 MUST-HAVE BRIDGE UPGRADES

**US**  
**ISLAND DESTINATIONS**  
DIVING IN THE MALDIVES WITH  
*Golden Compass*  
EXPLORING THE GALAPAGOS ON  
*Big Fish*

MAY 2011



A BOAT INTERNATIONAL MEDIA PUBLICATION

# CORTINA

THE COOPERATIVE EFFORT OF TWO U.S. YARDS HAS RESULTED IN THIS COLORFUL CRUISING YACHT DESTINED FOR FAMILY FUN.

TEXT BY LIZ PASCH PHOTOGRAPHY BY BILLY BLACK





CORTINA

GEORGE



*When an Alabama-based* yachtsman started thinking about his fourth yacht his goal was clear: create a private, casual retreat—"like a traveling vacation home"—for his family to gather and enjoy each other and their surroundings. What he didn't know was that achieving his goal would require two different builders and a slew of master craftsmen.

With his wife, two children and six grandchildren in mind, the former competitive sailor's wish list included a larger galley and TV room than what was in his former yacht (a 100-foot raised pilothouse) and enough freeboard to handle the sea but a yacht that was still small enough to get into some of his favorite anchorages in The Bahamas, his family's preferred cruising grounds. He also had a distinct vision for the interior joinery.

The client's custom requirements called for a custom builder, which he found on the docks of the Fort Lauderdale International Boat Show where his interest was piqued by an expedition yacht built by Newcastle Shipyards based in Palm Coast, Florida. He contracted Newcastle to build a 114-foot tri-deck with an M.G. Burvenich design. Murray & Associates was retained by Burvenich to provide specific engineering and



architectural consult. "We spent eighteen months with Burvenich, room by room, inch by inch, to get what we wanted," says the owner.

His objective for the joinery led him to Hodgdon Yachts, a nearly 200-year-old yacht builder in Maine, which, at the time, was interested in supplementing its sailing yacht-building business by taking on interior projects. He was familiar with the intricate woodwork Hodgdon built for its custom sailing yachts and visited its facility in Maine to meet the skilled craftsmen and women. Although his vision was for a much simpler style, he liked what he saw and was confident of Hodgdon's expertise. Peter Horne, project coordinator for Hodgdon Interiors, worked directly with the client, Newcastle Yachts and the Hodgdon design team to establish the basic interior design elements that they would

build in Maine and then ship to Florida for Newcastle's craftsmen to install. It was Hodgdon's first project supplying interior components for an outside shipyard to install; it was a potentially combustible arrangement, yet one that worked very well.

"The relationship between Newcastle and Hodgdon Interiors is a positive one," says Horne. "There is a professional understanding between yacht builders. Obstacles encountered were viewed with an understanding of yacht production by both companies, thus could be addressed as an experienced yacht-building team."

In keeping with the owner's desire for a family-based vacation home, there is no formal dining salon. Instead, a large rectangular table on the enclosed aft deck provides ample dining space even without the two additional leaves. A Corian-topped wet bar with refrigerator



In lieu of a formal dining salon, the aft deck was enclosed for relaxed dining with unsurpassed views. The aft deck is fresh, inviting and protected from the elements.



These pages Hodgdon Yachts was chosen for its wood-working expertise, while Newcastle Shipyard's custom capabilities won the owner's approval.

Cortina's interior is whimsical, akin to a vacation home. The cream walls are accented by brightly colored furniture that is meant to be comfortable and easygoing.



and icemaker provides additional counter space for an easy, breezy casual buffet space.

Enclosing the aft deck on a yacht this size adds a lot of living space on the main deck, which is shared with an on-deck master. The teak-decked aft room is bright and airy, yet cozy, creating a summer porch for dining al fresco with the benefit of protection from the elements.

French-style doors lead from the aft deck into the salon. Comfy seating includes a denim-colored four-cushion sofa, two matching chairs and two accent chairs in the same stripe as the aft deck's cushions. Dark wicker accent tables flank the chairs and a large apricot-colored coffee table holds stacks of books, magazines or board games on two sturdy shelves below. Starboard, a games table is at the ready for a rousing game of backgammon, a favorite of the owner. The requisite flat-screen television is concealed in a wooden cabinet, above which hangs a colorful painting courtesy of the owner's brother-in-law, Dick Jemison, a well-known Santa Fe, New Mexico, artist. Walls covered in washable, vanilla-color synthetic baby ostrich complement the caramel and cream berber carpet. Thick carpet pads used throughout the yacht's carpeted areas make the low pile comfortable yet practical.



The starboard-side foyer was designed with spacious proportions, allowing for a unique feature in a 114-foot yacht: a 400-lb-capacity, pneumatic tube elevator that provides access to three levels.

The main-deck full-beam master stateroom sports casual appeal with blue-and-orange striped berber carpet. Bright white burlap-textured walls complement the simple but elegant grain of cherry joinery and cabinetry. A custom cabinet houses a large flat-screen television mounted on a hinged arm to view from either the bed or the sitting area to starboard. His closet has additional storage for the masts and sails of twin remote-controlled sailboats, exact models of the women's challenge of the America's Cup, which are brought out for friendly or fierce competition—depending on who's aboard—when at anchor. His-and-hers walk-through baths have easy-care countertops and comfortable vinyl flooring.

Guest rooms on the lower level—one with a king and two with twin beds—follow the same carefree and colorful vacation-theme décor and include en suite bathrooms and Aquos flat-screen televisions. The twin cabins have a shelf rail on the wall alongside both beds to serve as a bedside table of sorts to store a book or water bottle.

Three cabins accommodate six crewmembers. There's no crew mess on this family-friendly boat, however; the crew congregates and eats at the galley dinette, sometimes alongside one of the owner's grandchildren. The children are rarely underfoot of the chef, though, due to the practical U-shape of the food preparation area.

The owner's captain of 11 years opted out of a dedicated helm seat on the bridge, feeling it would take up

too much room. Instead, a large, raised, red leather sofa provides a clear sightline when the watch officer takes a welcome break from standing at the helm of the MCA-certified and ABS-classed yacht.

Aft of the wheelhouse, a dayhead—papered in whimsical, red-and-burgundy animal print—also services the skylounge, where a large sectional, cushioned wicker ottomans and wicker chairs flanking another games table provide ample seating and play area for younger family members as well as the young at heart.

For the sun worshippers, a large sunpad on the flybridge has multiple headrests that convert easily so sunbathers can follow the sun. L-shaped bench seating around a large table provides 360-degree views, and a double helm chair to port lets a few grandkids stand watch beside the captain in his single centerline chair.

Building a yacht with one yard can present its share of challenges; to build with two—especially with one installing the other's work—and encounter few issues is a testament to the quality of both yards. According to the owner, the process was worth the effort and the wait.

"The results are right on with what was desired," says the family man, who at press time was anxious to complete the last round of sea trials required by MCA before embarking for several months of cruising The Bahamas and bonefishing in one of the two tenders, a 16-foot Backcountry flats boat. And if the owner's two children—for which the boat is named—have any say, they may be able to take the other tender, a 21-foot Chaos, for a little joyride and leave their kids with the grandparents on the floating vacation home.

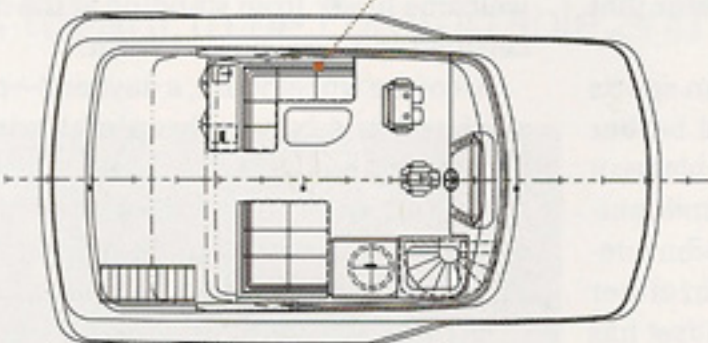
ENHANCED DIGITAL CONTENT ON IPAD & ZINIO



These pages  
A family yacht, *Cortina*  
has some select creature  
comforts requested by the  
owner, such as an elevator  
that reaches three decks  
and additional storage  
in his wardrobe for twin  
remote-controlled model  
sailboats.

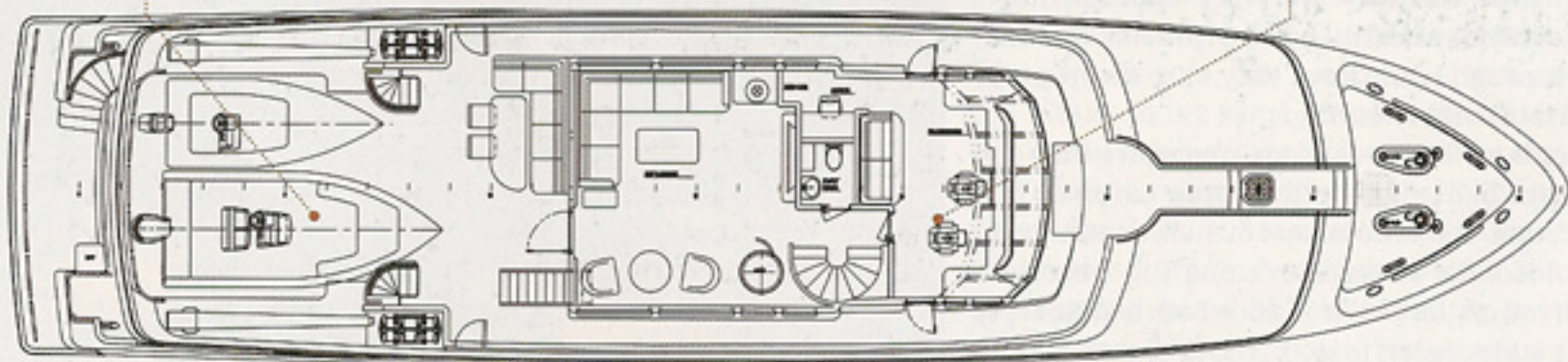


**FLYBRIDGE:** Designed for family enjoyment, the flybridge hosts sunpads, al fresco dining and a twin helm seat just for guests.



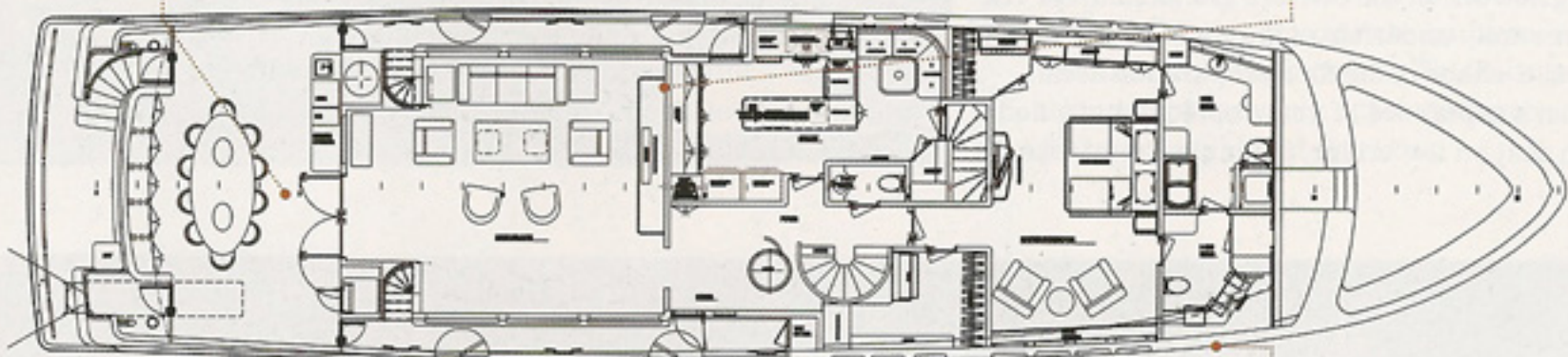
**TENDERS:** Two tenders—a 16-foot flats boat and a 21-foot center console—accommodate multiple family members' interest in fishing.

**BRIDGE:** The captain opted to forgo a helm chair to save space on the bridge, which offers excellent sightlines from spectator seating.



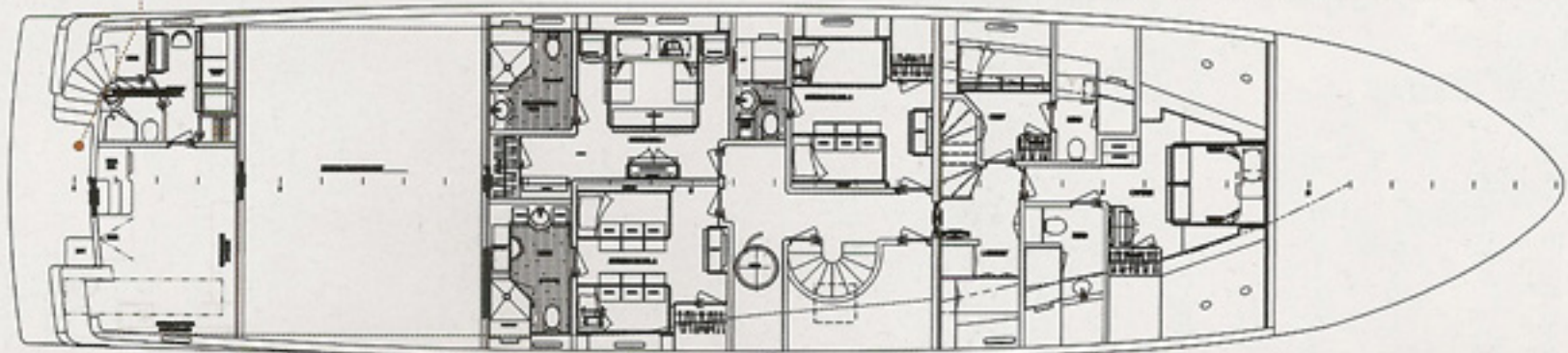
**AFT DECK:** Choosing to enclose the aft deck added to the interior living spaces while creating a homey "back porch" feel.

**ELEVATOR:** An unusual feature in a yacht of this size, Cortina's 400-lb-capacity elevator provides access to three decks.



**WATER ACCESS:** A wide staircase leads down to the swim platform that provides safe, easy access to watersports activities.

**CERTIFICATION:** Although Cortina is solely for private use, the owner chose to have her built to MCA requirements and ABS class.



LOA: 113' 9" (34.7M)  
LWL: 97' 6" (29.7M)  
BEAM: 25' 6" (7.8M)  
DRAFT (HALF LOAD): 6' (1.8M)  
DISPLACEMENT (HALF LOAD):  
150 TONS  
POWER: 2 X MTU 12V 2000  
M93 COMMON RAIL  
MARINE GEARS: 2 X ZF 3050A

SPEED (MAX): 14  
FUEL CAPACITY: 10,000 GALS.  
THRUSTERS: 72-HP QUANTUM  
QT-60  
STABILIZERS: QUANTUM QC  
1000 UNDERWAY  
GENERATORS: 2 X 65KW  
NORTHERN LIGHTS  
FRESHWATER: 2,000 GALS

GRAY/BLACK WATER: 600 GALS  
OWNER AND GUESTS: 10  
CREW: 4-6  
TENDERS: 21' CHAOS, 16'  
BACKCOUNTRY FLATS BOAT  
CONSTRUCTION: ALUMINUM  
CLASSIFICATION: ABS, A1 AMS  
COMMERCIAL YACHTING, MCA  
NAVAL ARCHITECTURE AND

EXTERIOR STYLING: MICHAEL  
BURVENICH  
INTERIOR DESIGN: HODGDON  
YACHT INTERIORS  
BUILDER/YEAR: NEWCASTLE  
SHIPYARDS/2010  
195 COMFORT RD. PALATKA, FL  
TEL: (386) 312-0000  
WWW.NEWCASTLEYACHT.COM